

Welcome to Panama Stream Family Camp

Please read and follow our information so everyone enjoys their stay and looks after the camp.

You must have a valid booking to stay at the camp

- Contact Reserve Manager Robin Burleigh on 03 304-8526 to arrange your stay.
- The Camp is available to groups and families seeking a "back to basics" traditional kiwi camp and to learn more about our conservation work.
- Camping is available for tents only, not suitable for campervans.
- There is no mobile phone coverage in Le Bons Bay. Return to the Summit Road to get signal.
- We do not charge for staying here, but we ask you to consider making a donation to assist the Langer Trust with maintaining the camp and reserve.

Looking after the camp

- Conservation comes first here on Langer Reserve, so please ensure you have no impact on the environment during your stay.
- High fire risk at all times - absolutely no fires or smoking on site.
- Use camp stoves in the kitchen or on the picnic table, not on the grass.
- Pack out all rubbish.
- Please use the toilet and sink provided for your ablutions.
- Boil water before drinking.
- Allow time to tidy the camp and clean the ablutions block before you leave.
- Ensure you close and lock the gate on departure.
- You may donate in cash to Robin or to our bank account 020832 0011669 00
- You are responsible for your own and your children's safety

Enjoy exploring Josef Langer Reserve and
Le Bons Bay during your stay!

Reserve Manager
Robin Burleigh



Langer Reserve

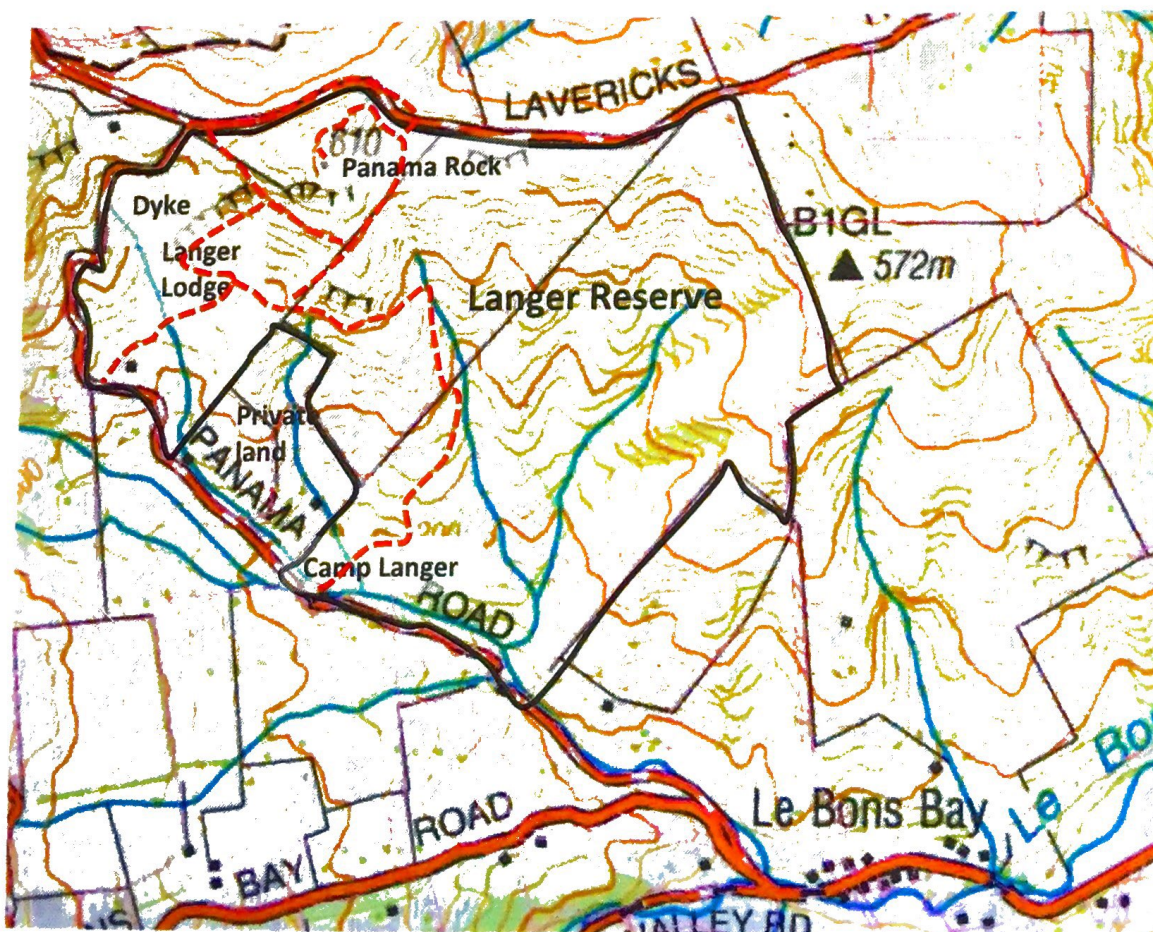
Conservation, Education and Recreation

The Josef Langer Trust started in 2003, after German immigrant Josef Langer left his estate to assist with the restoration of the environment. The Trust has a broad mandate to encourage and promote the enhancement, sustainable management, and conservation of the physical and natural environment and natural resources within Banks Peninsula.

The Josef Langer Trust has supported many environmental and educational projects including initial funding for the Wildside project - a long running program monitoring and trapping pests in the south eastern corner of the Peninsula including Le Bons Bay.

The Langer Reserve came into being after the Trust purchased land at the top of Panama Road including the magnificent Panama Rock dome (also known as Keller's Peak) lava dyke, and a magnificent sweep of old growth and regenerating native forest. The Reserve has since increased in size and now occupies 205ha. The land is managed to facilitate the protection and expansion of native forest, with grazing stock excluded enabling the bush to regenerate naturally. Every year we are astonished at how fast that is happening, and how areas only recently used for pastoral farming are reverting to their natural condition.

You can explore the reserve on a network of walking tracks and we recommended following the track from the camp all the way to the top of Panama rock. Langer Lodge, our little hut, makes a good lunch stop. Keep hold of children on the summit - the cliffs are dizzying with views to match!



Reserve boundary

Walking tracks

PANAMA ROCK



Full walk: 2 hours
circular, 3.4 km, 300 m
climb

Short walk: 30 mins
return, 1 km, 100 m climb

SAFETY
Summit road
you can
at the
the
the
can
not

Stand atop the magnificent Panama Rock lava dome and enjoy expansive views over Le Bons Bay to the Pacific ocean and distant Kaikouras.

Getting There: Short walk or 2WD vehicle: Use Lavericks Ridge Road entrance. Access Lavericks Ridge Road from Le Bons Bay, or Summit Road via Camerons track.

From Le Bons Bay turn up Lavericks Ridge Road before the beach and make a sharp left at the top of the hill. The reserve entrance is a further 4 kms.

From Summit Road it is nearly 5 kms along Camerons Track to Lavericks Ridge Road. Do not turn down Big Hill Road to Okains Bay by mistake.

The Lavericks Ridge Road Reserve entrance is at the farm gate below the

peak on the Le Bons Bay side of the road.

Getting There: Full walk with 4WD vehicle: If you have a 4WD vehicle and intend doing the full walk use the lower reserve entrance on Panama Road. Reach Panama Road from the Le Bons Bay village or the Summit Road via Camerons Track. (The reserve entrance is 2½ km up Panama Road from Le Bons Bay, 1 km down from Camerons Track). A 4WD vehicle is essential on Panama Road.

Walking Directions from Lavericks Ridge Road entrance:

The route up Panama Rock (also known as Kellers Peak) is an easy climb through pastureland on a mowed track marked with white topped poles. This takes about 30 minutes there and back and on a good day the summit makes an excellent spot for a picnic. Those doing the full walk may want to save the summit for the end.

To start the full walk, head west (away from the sea) on Lavericks Ridge Road. Turn left onto Panama Road and descend steeply for 1 km to the Panama Road reserve entrance on the left.

Walking Directions from Panama Road entrance: Go through the gate labelled Josef Langer Trust and ensure you close it behind you. Follow the farm track to the next gate and then up through beautiful bush. Soon you will reach a junction with the

Panama Rock



track to Langer Lodge. Turn right to continue on the main track to the peak.

Once the farm track peters out you are on "The Grunt" a steep uphill track through gorse and regenerating bush marked with orange pigtales. Look out when the track levels off and heads toward the rock – you need to veer right and continue on "The Grunt" to emerge near the Lavericks Ridge Road entrance. Turn left and follow the white markers to the top. Return to your vehicle via Lavericks Ridge Road and Panama Road.

Josef Langer Trust

The Panama reserve belongs to the Josef Langer Trust, a charitable organisation created when this German immigrant left his estate to assist with restoration of the natural environment to its status before human intervention.

Langer Lodge: The Trust welcomes the visiting public to walk the track route given here and to use the verandah of Langer Lodge for shelter and picnics. The Lodge is available for overnight use by pre-booked parties who contribute to the reserve through active conservation work or to use it for youth education. Contact reserve manager Robin Burleigh if you would like to bring such a group.

Dogs: The Trust has generously allowed dogs on this reserve, and for well-behaved dogs to be off lead under effective control. Please ensure that dogs are managed well so that this privilege remains open to others.